

## Continuous motion Form, Fill and Seal Machine LCM 500

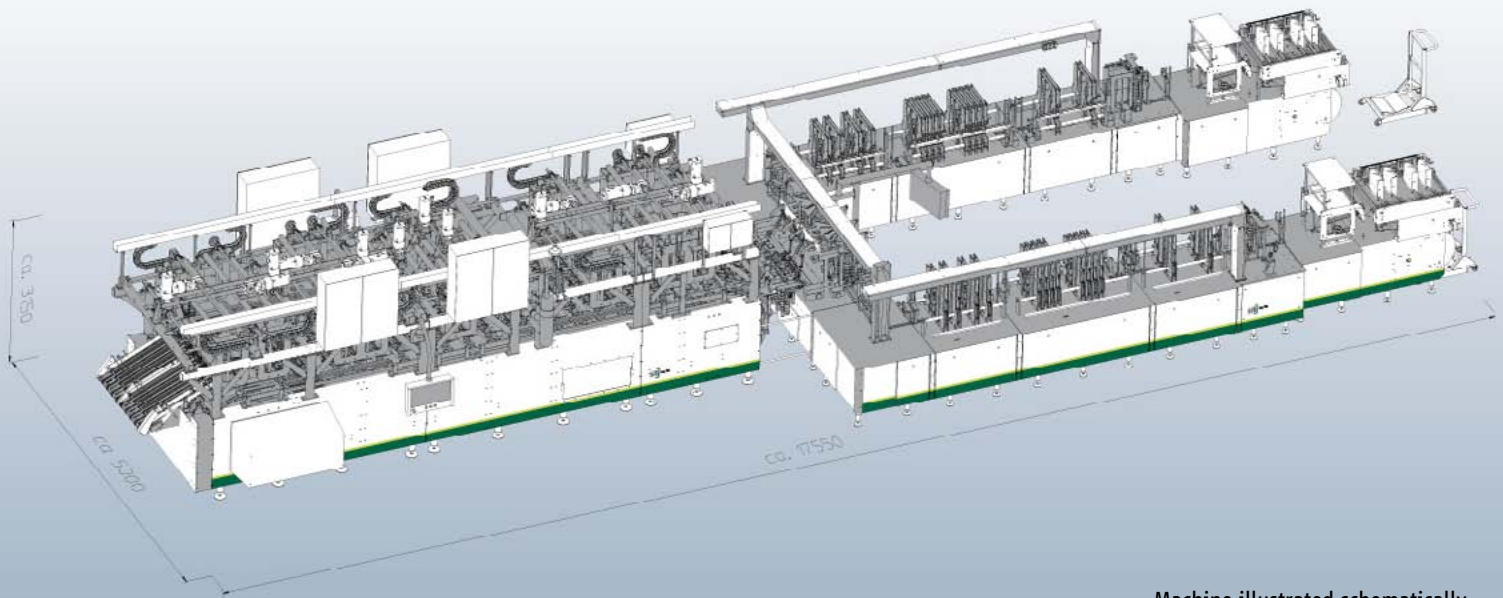
**Continuously working FFS machine for the production of flat or stand up pouches at highest production speed, also with reclosure systems as for example spout or zipper.**

**Food, Pet Food, Beverages, Pharmaceuticals, Nonfood, Household, Personal Care**

- Continuous linear dosing with variable number of dosing stations
- Hygienic construction and easy cleaning
- Operation and visualization via touch screen
- Innovative state of the art machine design
- High quality construction and long life machine components
- Dosing equipment: Slide doser, auger doser, scales, micro doser for smallest volumes, rotary and valve pumpdoser, seed dosing equipment, doser for individual goods, flow meter
- Peripheral units can be easily integrated
- Modular machine concept
- Available as FS-machine to fill and seal pre-made pouches
- Synchronization with linear and multi-head weigher



Uniquely customized.  
Uniquely economical.



Machine illustrated schematically

### Technical details LCM 500

Specifications	LCM 508 FFS	LCM 506 FFS	LCM 504 FFS	LCM 508 FS	LCM 506 FS	LCM 504 FS
Pouch size [mm]	Width 80 - 115 Length 80 - 350	Width 80 - 165 Length 80 - 350	Width 80 - 270 Length 80 - 350	Width 80 - 115 Length 80 - 350	Width 80 - 165 Length 80 - 350	Width 80 - 270 Length 80 - 350
Machine output [Pouches/min]	up to 500*	up to 375*	up to 250*	up to 400*	up to 300*	up to 200*
	* depending on filling characteristics and pouch size					
Packing material	sealable laminated film					
Construction	Standard to process dry products Optional wash down design					
Safety equipment	Acc. to the international safety regulations e.g. CE , UL, CSA, OSHA					
Electricity power [kVA]	ca. 80 <sup>1)</sup>	ca. 70 <sup>1)</sup>	ca. 60 <sup>1)</sup>	ca. 60 <sup>1)</sup>	ca. 50 <sup>1)</sup>	ca. 40 <sup>1)</sup>
Electricity supply	3 x 400/230V + N + PE, 50/60 HZ					
Voltage [V]	400 / 230 / 24					
Air consumption	ca. 1000 NI/min, 6 bar <sup>1)</sup>					
Machine dimensions LxWxH [mm]	ca. 17.550 x 5.000 x 3.150 <sup>1)</sup>			ca. 8.500 x 2.200 x 1.900 <sup>1)</sup>		

<sup>1)</sup> Depending on configuration. Technical modifications reserved.

Standard equipment	Optional equipment
Pouch control (no pouch – no filling)	Date code systems
Leerbeutelabscheidung	Variable number of dosing stations
Film edge control	Ultrasonic sealing
Motor driven roll lifting unit	Reclosure systems
Convenient process control	PLC Allen Bradley
PLC Siemens, Teleservice, Recipe management	Nitrogen gassing
Wash down construction	Further details on request



Uniquely customized.  
Uniquely economical.